

Note:

- 1.The installation instructions may differ slightly from the actual operation. If there are any differences,please follow the actual situation or contact us.
- 2.Warning: Please do not disassemble any part by yourself,any improper operation will not be covered by our warranty.
- 3.Before installing the product, watch the installation video and manual carefully.



Intel Version - Harness



**AMDVersion
- Harness**

Installation Step



1. Assemble the dash screen on the bracket, and screw in two screws



2. Slide the steering wheel to the bottom, and then move the steering wheel to the outermost position



3. Use a tool to pry up the cover



4. Pry off the upper cover of the driver's footwell, then route the harness plug ① onto it according to the instructions in the picture, and connect it with dash screen



5. Install the cover



6. Harness wiring diagram

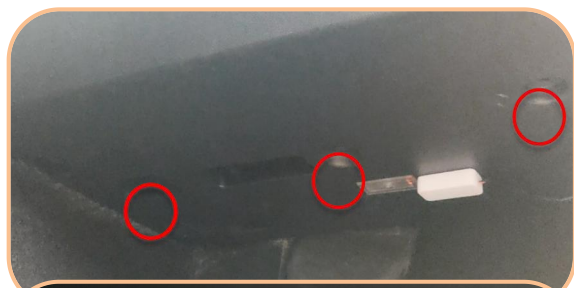


6. Remove the center console trim panel cover



For AMD version

7. Connect harness plug ② to this position (Please skip this step for Intel versions)



8. Remove the upper cover of the passenger side's footwell



9. Then remove the side cover plate of the passenger side's footwell



Model Y



Model 3

10. For AMD version

Connect plug ③ (AMD harness) with the blue plug under the A-pillar of the front right seat (same for both LHD and RHD vehicles; it's separate female socket. Connect with the blue plug under the A-pillar of the front right seat)



10. For Intel version

Find the second gray plug of the main engine above the passenger's footwell, and connect the plug ② (Intel harness) with the second gray plug.